



# VTF SERIES

Traditional Outdoor Fixed LED screen



# ***CONTENTS***

---

**01**

**Product Overview**

**02**

**Scorpe of Applicatons**

**03**

**Product Features**

**04**

**Product Specifications**



# *PART. 01*

## Product Overview

Traditional cabinets outdoor applications

# Traditional Classcial Design Solution for any outdoor conditions



Multiformit

Iron & Die casting Cabinet optional



Creative Shape

Creative shape for options



Full Range

From 2.8mm to 10mm

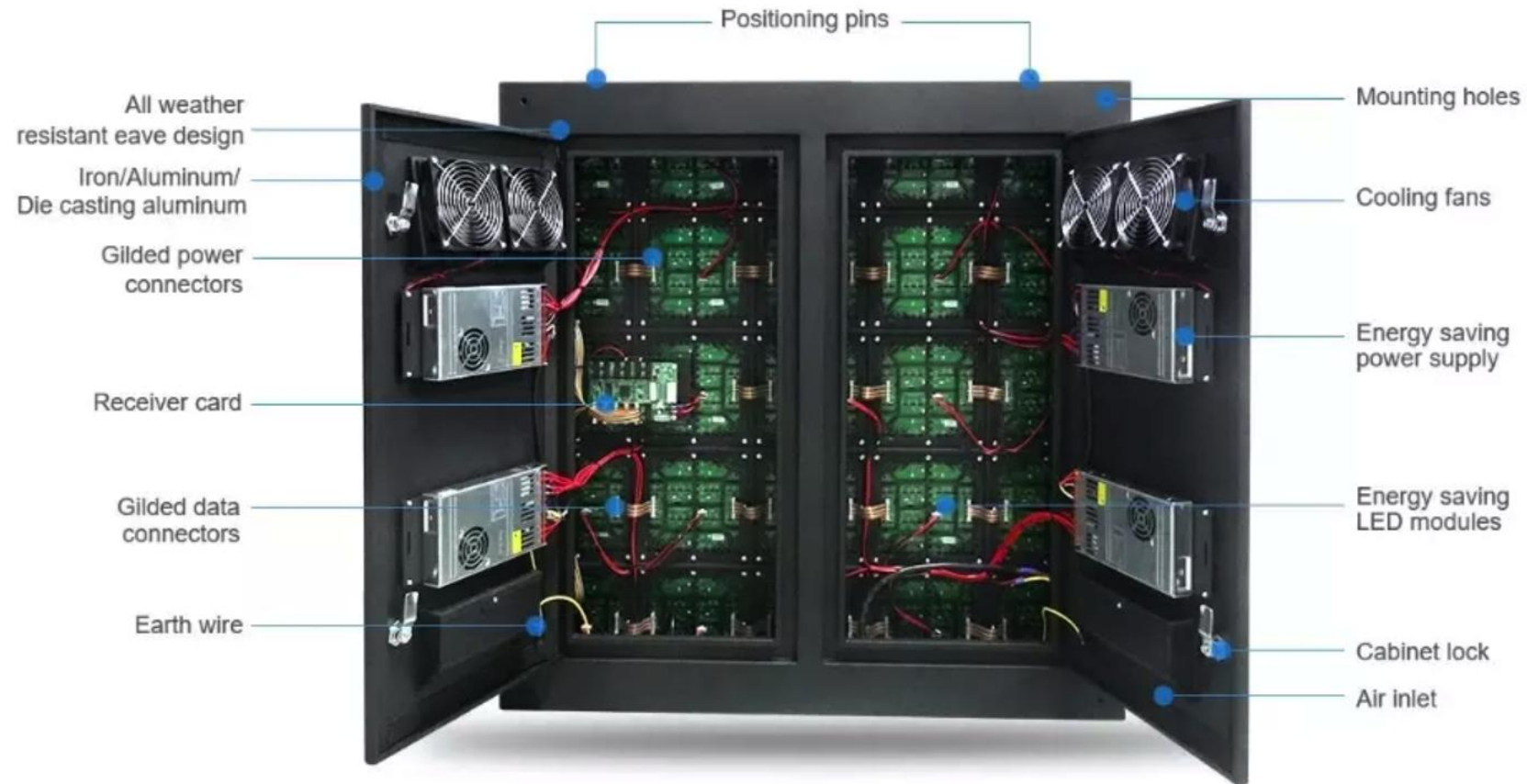


Maintenance

Front & Rear maintenance is available



# Product Detailed Vision



# *PART. 02*

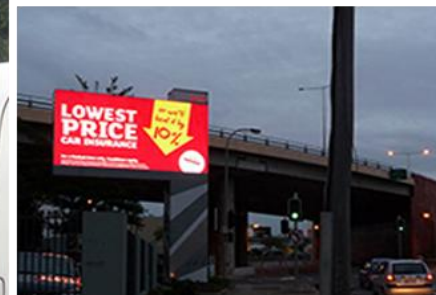
## Scorpe of Applicatons

Widely applications, outdoor fixed installations

## Scorpe of Applicatons

Durable and stable Show excellent pictures

Commercial street, Shopping mall, Office building,  
Train station, Pedestrian street , Central park, street  
cross etc.



# *PART. 03*

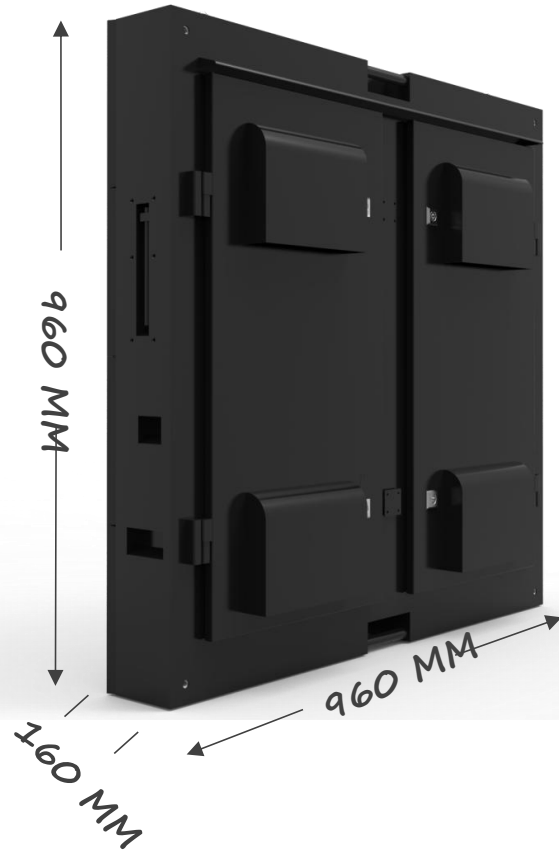
## Product Features

Design with economical alive



# Apperance

## COMPACT APPERANCE



P2.8 160 x 160mm



P3.6 160 x 160mm



P5 320 x 160mm



P6 192 x 192mm



P8 320 x 160mm

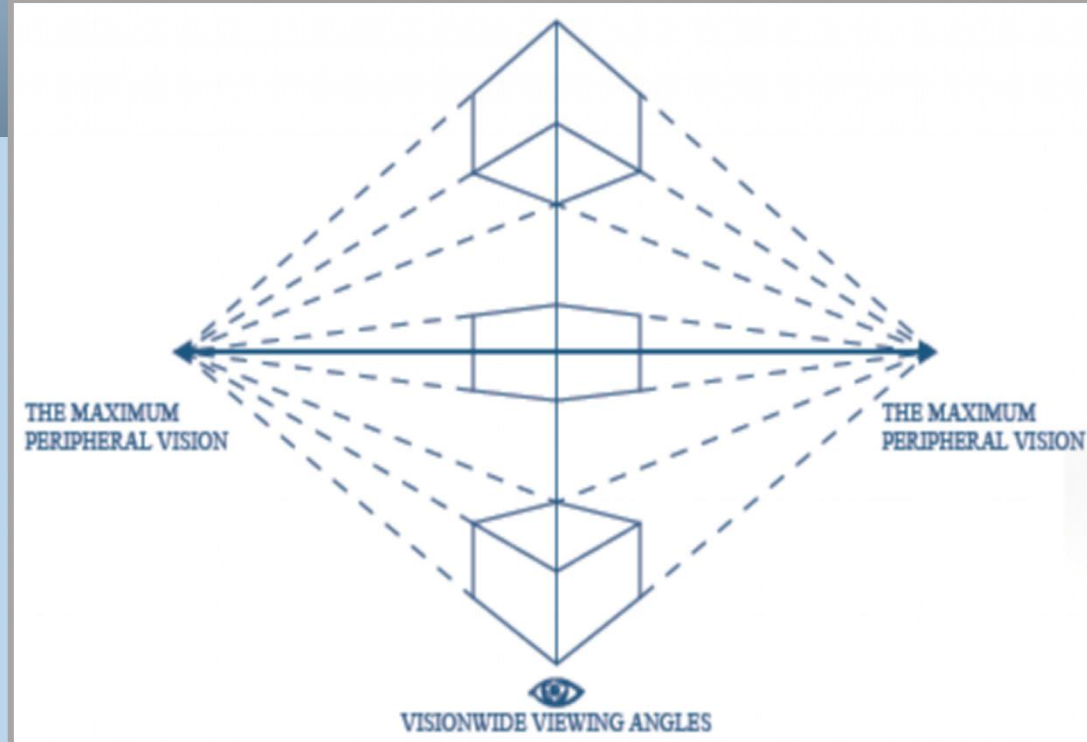


P10 320 x 160mm



## Die-Casting Aluminum Optional

## Performance



### Large viewing-angle, high brightness

- Horizontal view angle  $160^{\circ}$  / Vertical view angle  $140^{\circ}$ ;
- High Brightness reached to 6500nits; , which can fit more outdoor advertisements applications, outdoor stadiums and even in bright sunlight environment.

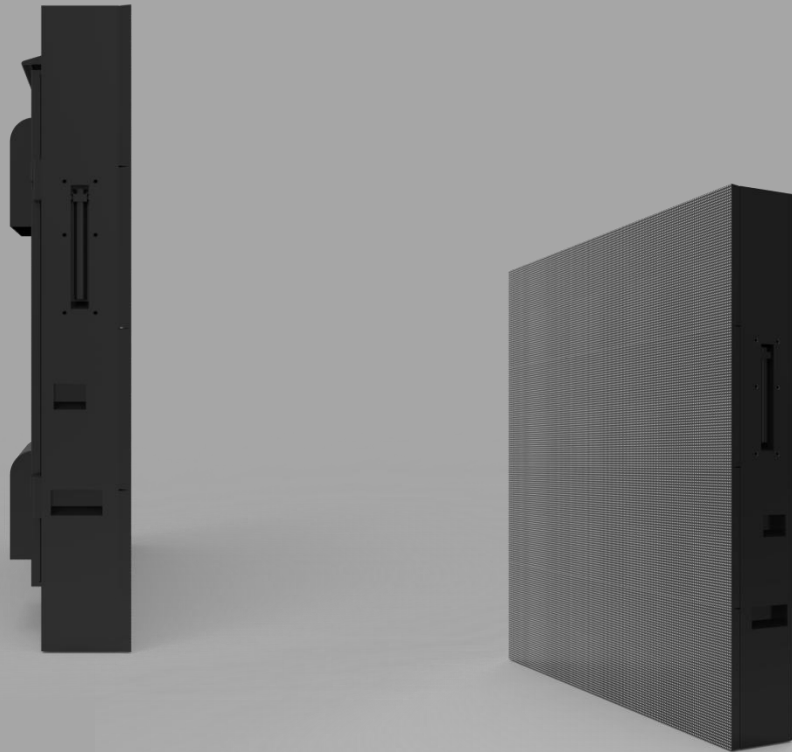
## Front or Rear maintenance

Front/Rear maintenance option

The cabinet support front maintenance. Modularization design is convenient for installation and maintenance, which can fit customer demands better.



## Standard weight reduce



Only for Aluminum cabinet

- Cabinet size: 1000\*1000mm;
- **Standard cabinet material: Steel**
- **EMC cabinet material: Aluminum.** Compared with traditional steel cabinet it's 20Kg lighter. When installed on column or on the wall it can decrease the weight to steel structure and save more steel structure material. Greatly saving the cost of transport and labor!

## Perfect Heat Dissipation



There are 4 pcs fans, which can improve the heat dissipation efficiently to ensure good and stable play performance.

## | Folding support handles



➤ Folding support handles , simple and easy, which are convenient for storage and transportation.

# *PART. 04*

## Product Specifications

Strong, Stable and High Brightness





# Specification

VTF models

| Pixel pitch             | 2.8mm   | 3.6mm     | 5mm       | 6mm       | 8mm       | 10mm      |
|-------------------------|---|-----------|-----------|-----------|-----------|-----------|
| LED configuration       | SMD1415   | SMD1921   | SMD2727   | SMD2727   | SMD2727   | SMD2727   |
| Brightness              | 5000 nits   | 5500 nits | 5500 nits | 6000nits  | 6000nits  | 6000nits  |
| Viewing angle           | 150° / 140°   |           |           |           |           |           |
| Scan mode               | 1/14  | 1/12      | 1/8       | 1/8       | 1/2       | 1/2       |
| Refresh rate            | 1920  | 1920      | 1920      | 1920      | 1920      | 1920      |
| Processing              | 14 bits   | 14 bits   | 14 bits   | 14 bits   | 14 bits   | 14 bits   |
| Module size             | 160x160mm   | 160x160mm | 320x160mm | 192x192mm | 320x160mm | 320x160mm |
| Panel size              | 960mm x 960mm x 125mm (W x H x D)                   |           |           |           |           |           |
| Panel weight            | 42kg/pcs  |           |           |           |           |           |
| Input voltage           | AC100~240V 50/60 HZ                                 |           |           |           |           |           |
| Power consumption (Avg) | 240W/sqm  |           |           |           |           |           |
| Power consumption (Max) | 720W/sqm  |           |           |           |           |           |
| Working temperature     | -40°C~60°C  |           |           |           |           |           |
| IP rating               | IP65/IP54   |           |           |           |           |           |
| Life span               | 100,000 hrs   |           |           |           |           |           |
| Warranty                | 24 months full warranty + 12 month free maintenance |           |           |           |           |           |