

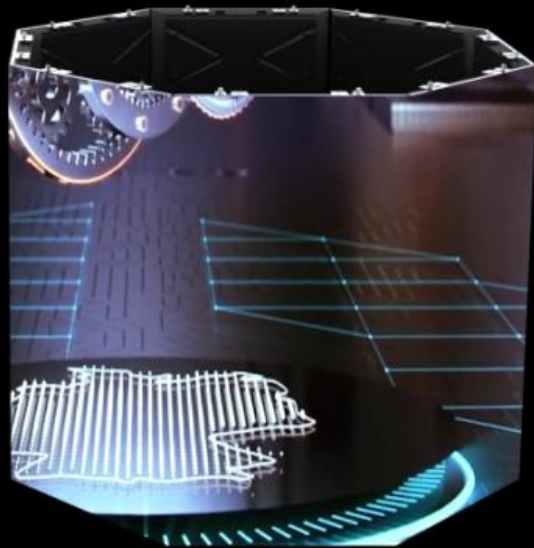
# VIN SERIES

Innovative Ultra-thin Indoor fixed Led screen

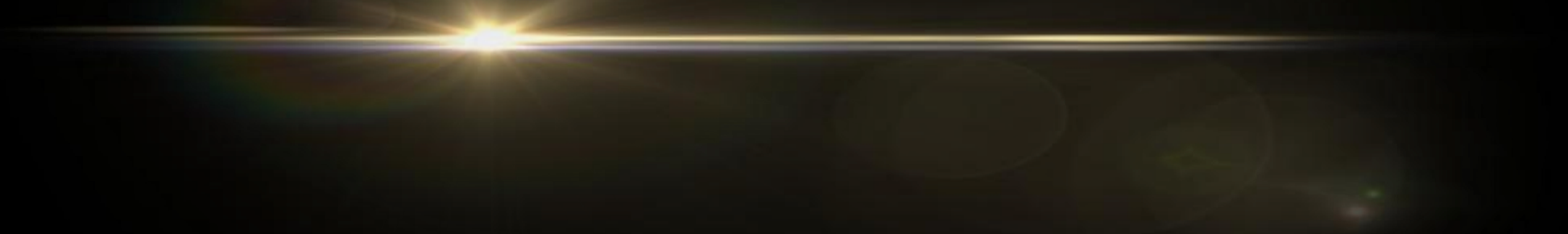
# *CONTENTS*

---

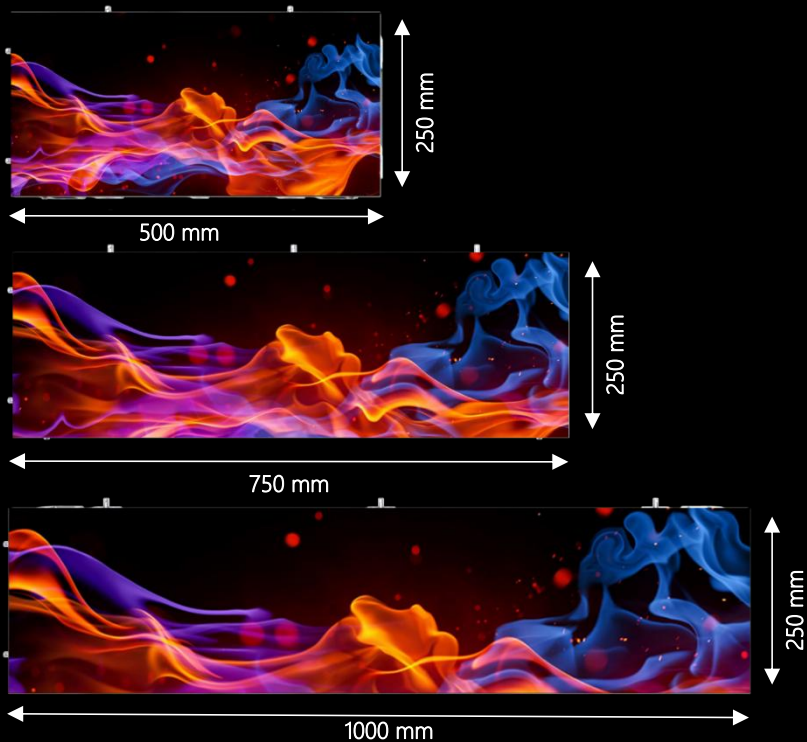
- 01 **Product Overview**
- 02 **Scorpe of Applications**
- 03 **Product Features**
- 04 **Product Specifications**



# VIN Series Appearance

A horizontal light flare with a bright yellow-white center, fading into a soft yellow glow, extending across the width of the slide below the title.

# Product Overview



5  
OPTION  
S

## MULTI-CABINET SIZES

- 500x250 x42mm
- 750x250 x42mm
- 1000x250 x42mm
- 500x500 x42mm
- 1000x500 x42mm

# Scorpe of Applications

A horizontal light flare with a bright yellow-white center, fading into a soft yellow glow, extending across the width of the slide below the title.

# Scope of Applications



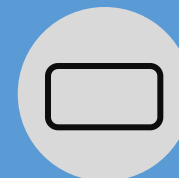
Theater



Broadcast



Control Room



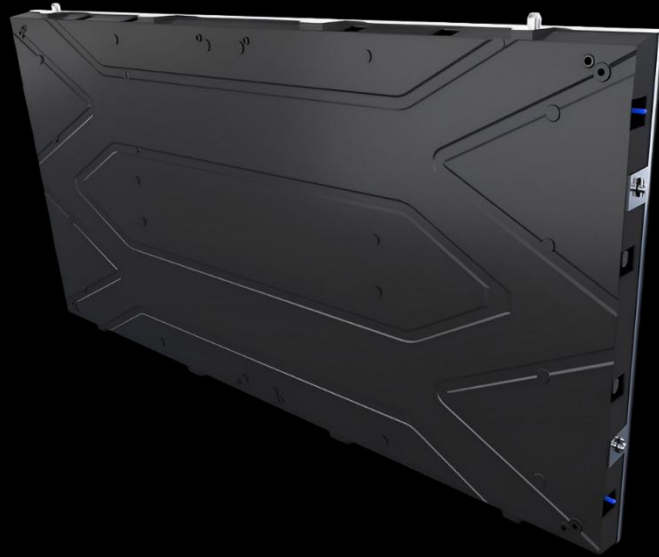
Commercial

Retail shops, chain stores, TV studios, VINemas, Airports, Museums



# Product Features

## Features Overview



**01**

Super lightweight and slim

**02**

Full range pixels for indoor use

**03**

Die-casting High flatness

**04**

Highly efficient heat dissipation

**05**

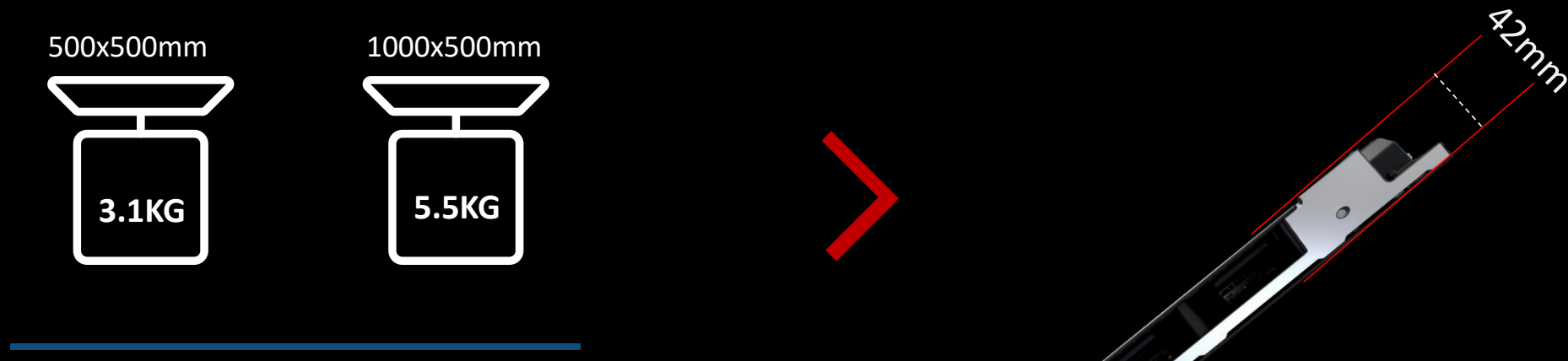
PSU and Receiving cards double backup

**06**

Full range cabinet sizes

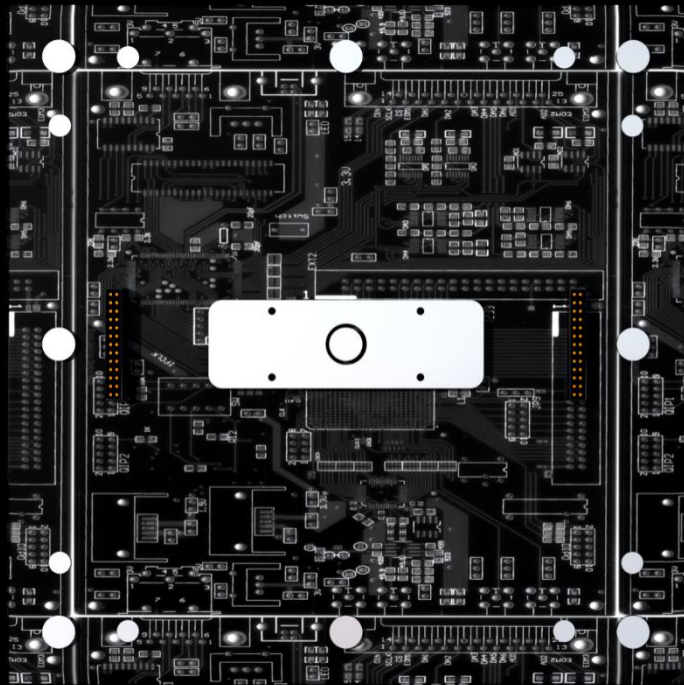


## SUPER LIGHTWEIGHT AND SLIM



- Cabinet is super light - only 3.1kg for 500x500mm cabinet and super slim with depth of only 42mm.

## ULTRA THIN MODULE WITH NO BACK SHELL DESIGN



Ultra-thin module, Without back shell

---



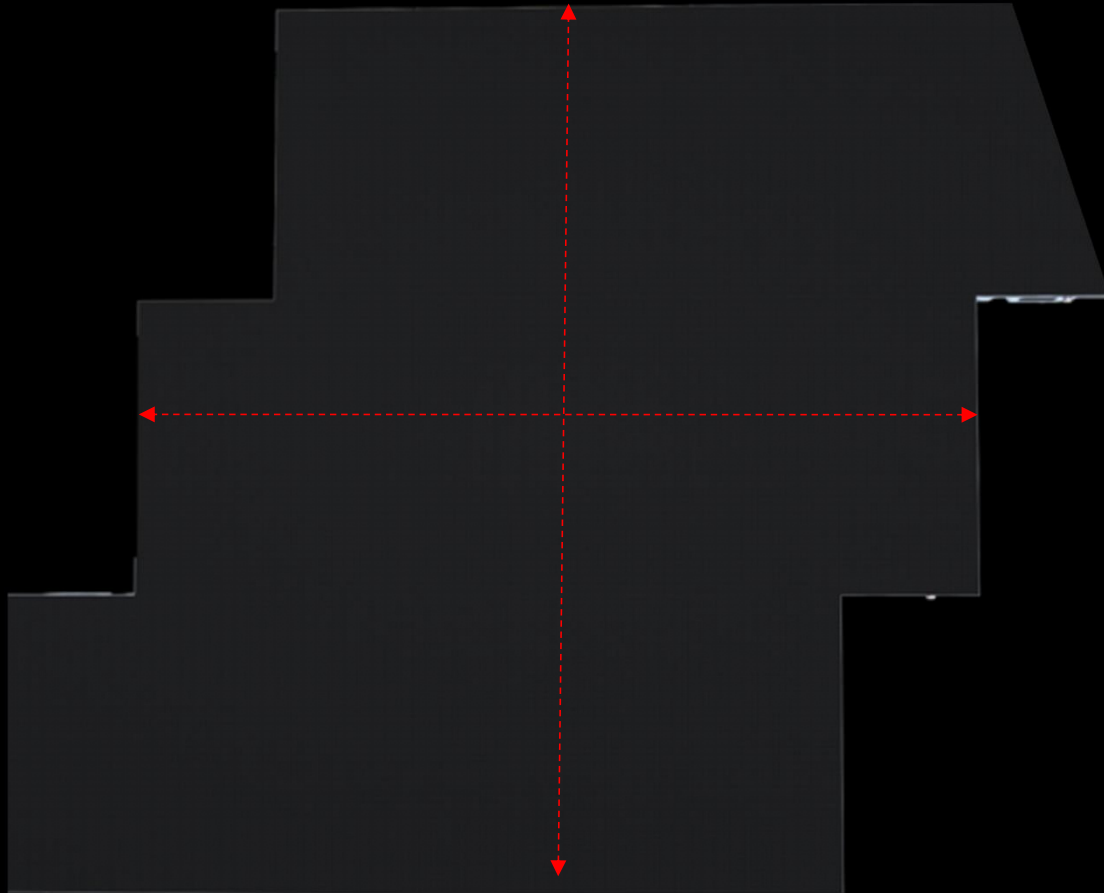
Convenient for dismantlement

---



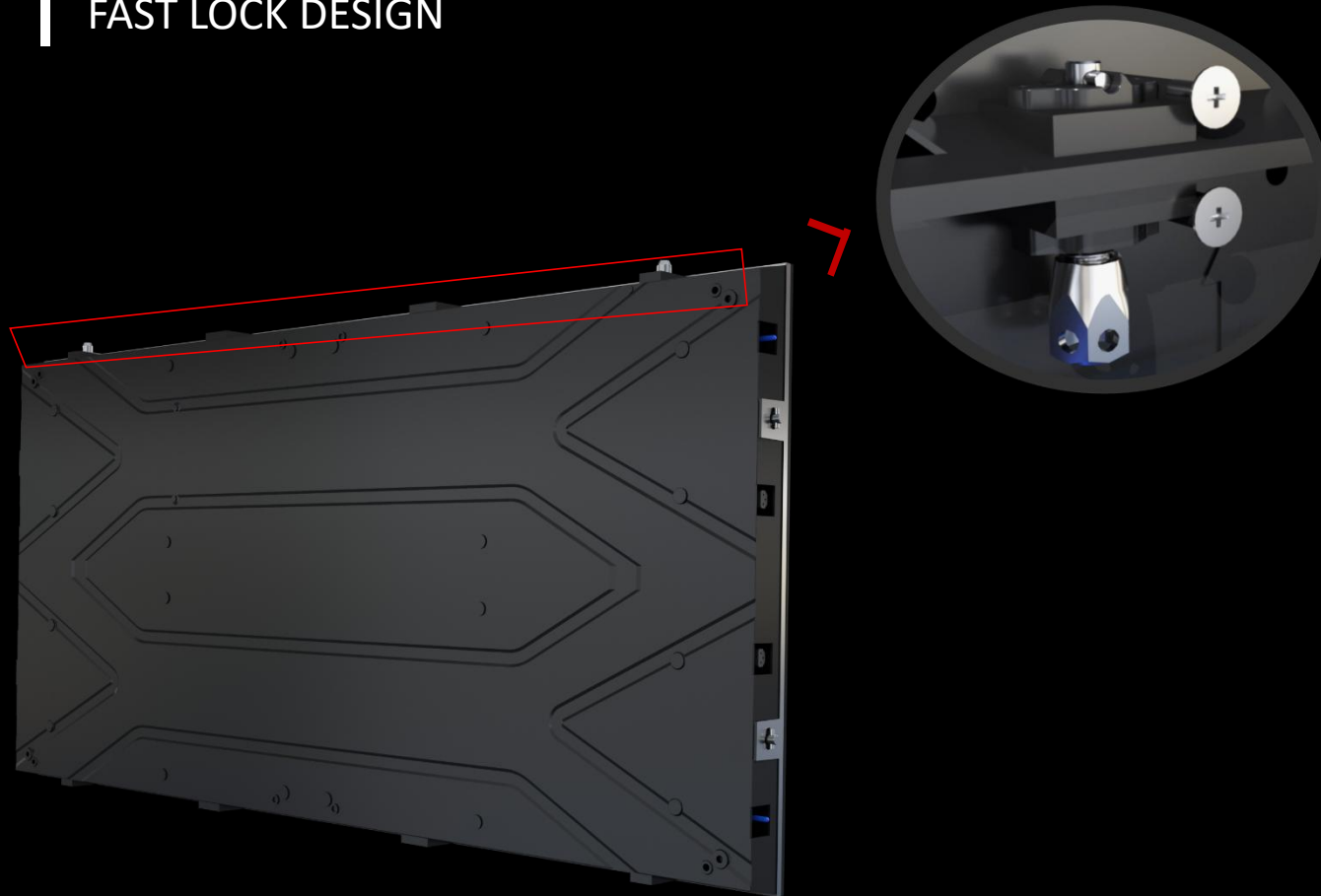
High Level Flatness

---

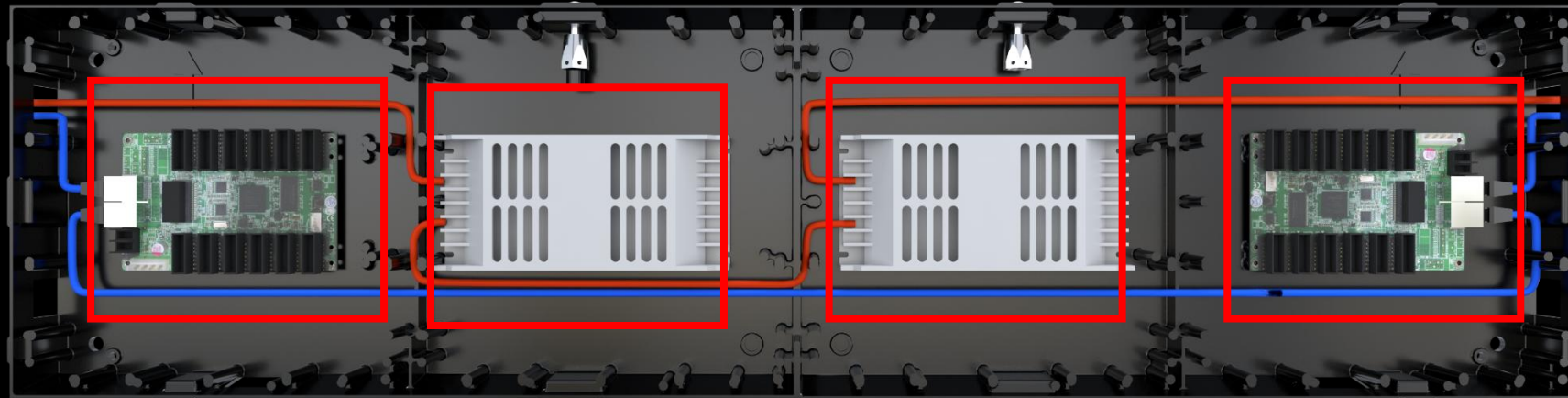


- Die-casting Aluminum cabinet, gap control between cabinet is perfect.
-

## FAST LOCK DESIGN



- Fast Lock between cabinet left right, up and down, Easy for installations and keep high level flatness between cabinets
-



## Dual backup

Dual redundant power supplies and Receiving Card in each panel.

If one power supply or card fails, the other can ensure normal working of panel.

# FULL FRONT MAINTENANCE

## Module

front magnetic maintenance +  
front vacuum maintenance



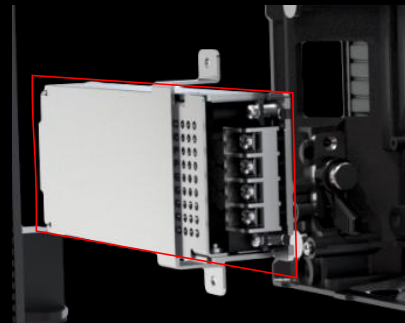
Front magnetic maintenance



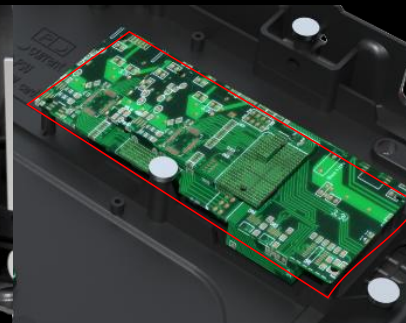
Front vacuum maintenance

## Front maintenance

PSU + HUB card + Receiving card



PSU



HUB card



Receiving card

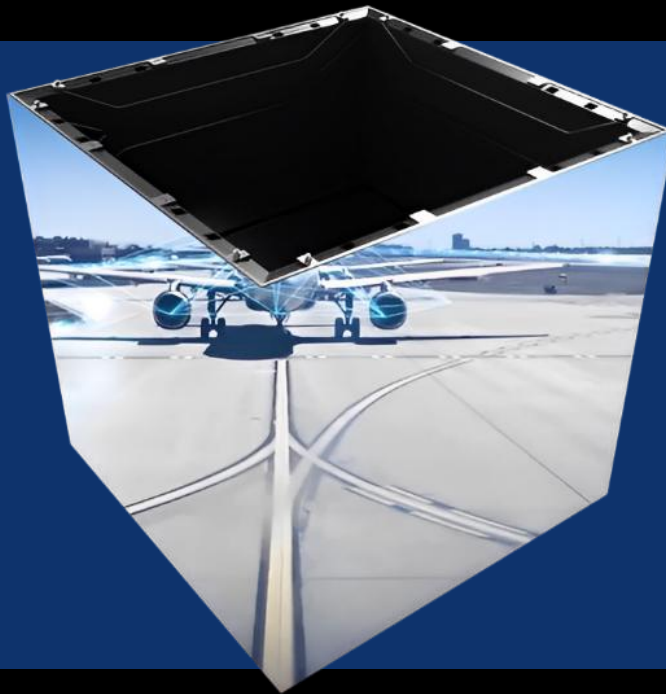
## HANGING AND COMBINE INSTALLATIONS



- Hanging installations with brackets,  
Special for indoor hanging use
- 

- Design with different sizes cabinets  
combine installations, in case of space  
not enough to use
-

## CURVE INSTALLATIONS OPTIONAL



### Curve Installations

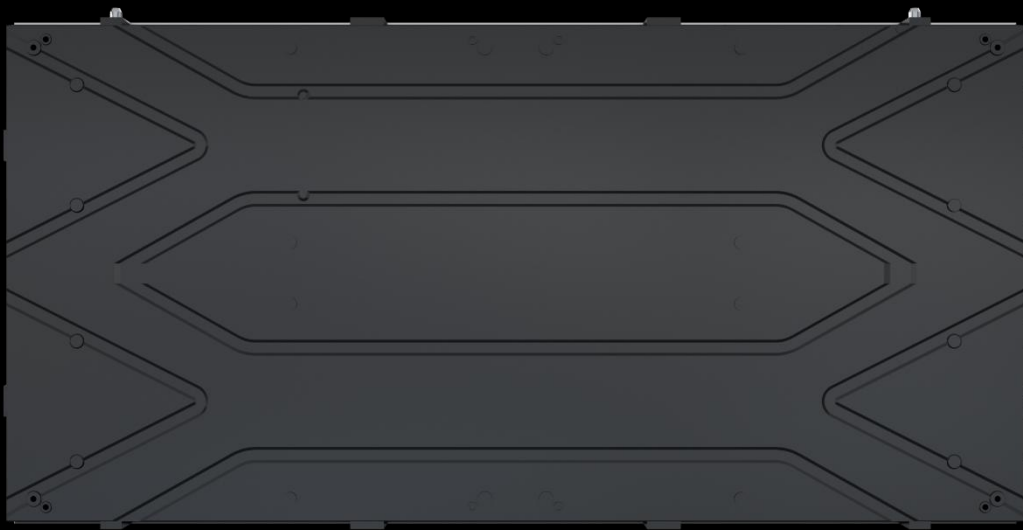
Vcore VIN Series design with cabinet cut function, It can be installed 90 degree and round shape





## Vcore Energy-Saving Technologies

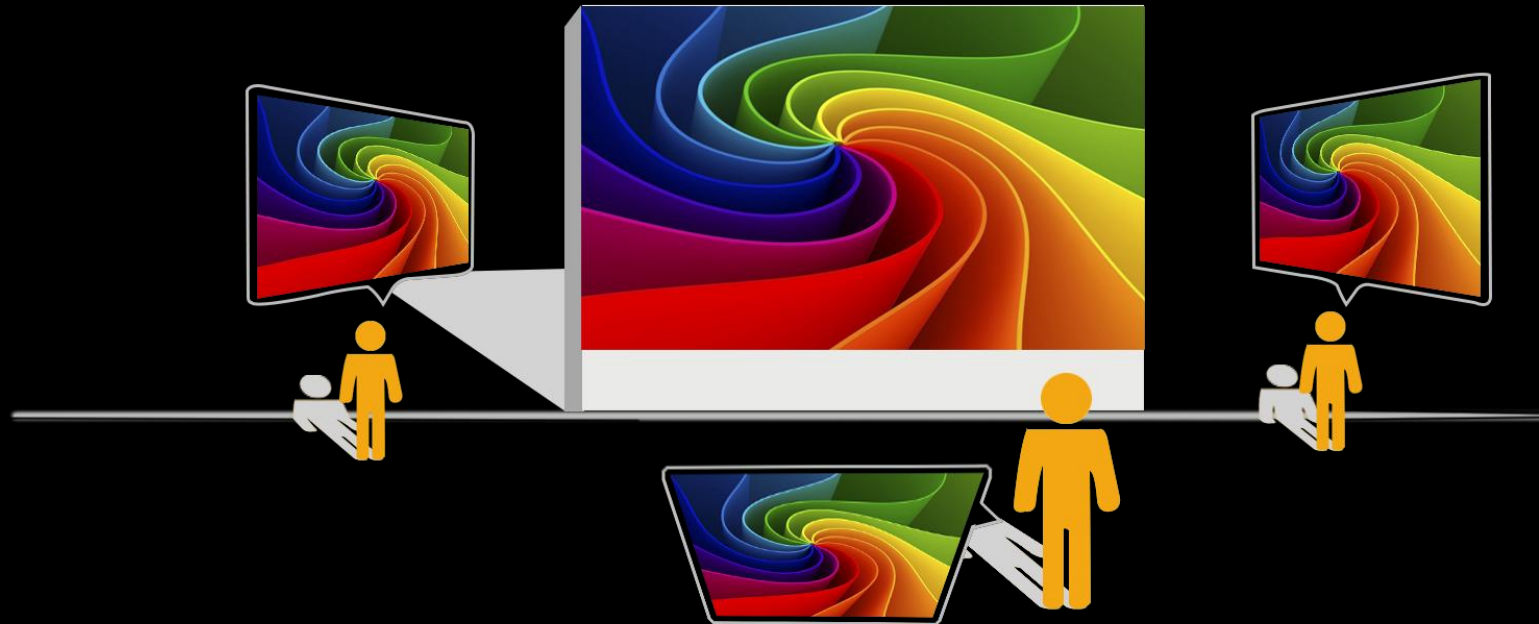
High brightness and low energy-consumption, it can increase 20% brightness or decrease 20% consumption for better heat dissipation and better contrast.



## Wireless Connections

No cables between cabinets and no apparent cables outside the cabinet. Inner cable connection will make the transmission of signal and power more stable, and the whole will look more neat and simple.

# WIDE VISUAL ANGLE



Horizontal : 170 degree, vertical : 160 degree



# Product Specifications



# Specification

## VIN models

Pixel pitch	1.9mm	2.6mm	2.9mm	3.9mm
LED configuration	1010	SMD2020	SMD2020	SMD2020
Brightness	800 nits	1000 nits	600 nits	600nits
Viewing angle	170°/ 160°	170°/ 160°	170°/ 160°	170°/ 160°
Scan mode	1/32	1/24	1/21	1/16
Refresh rate	≥ 1920/3840Hz	≥ 1920/ 3840Hz	≥ 1920/ 3840Hz	≥ 1920/3840Hz
Processing	14 bits	14 bits	14 bits	14 bits
Module size	250mm x 250mm x 3mm (W x H x D)			
Panel size	500mm x 250mm	750mm x 250mm	1000mm x 250mm	500mm x 500mm 1000mm x 500mm
Panel weight	2.8kg/pcs – 5.2kg/pcs			
Input voltage	AC100~240V 50/60 HZ			
Power consumption (Avg)	140W/sqm	120W/sqm	120W/sqm	120W/sqm
Power consumption (Max)	430W/sqm	400W/sqm	400W/sqm	145W/sqm
Working temperature	-20°C~60°C			
IP rating	IP42/IP31	IP42/IP31	IP42/IP31	IP42/IP31
Life span	100,000 hrs			
Warranty	24 months full warranty + 12 month free maintenance			