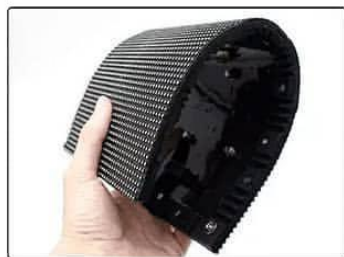


*Flexible LED Display*

## FL SERIES

Innovative and Creative flexible Led screen



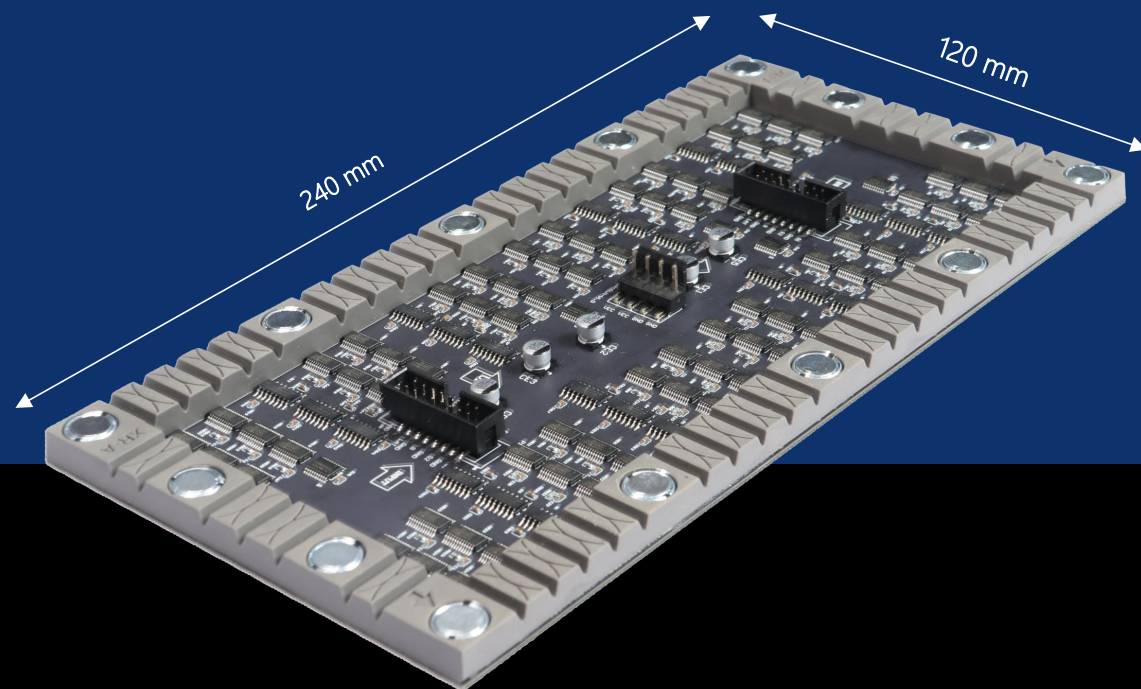
## *A Creative LED Display*

*for flexible curve indoor application*

# FL Series Appearance

A horizontal light flare with a bright yellow-white center, fading into a soft yellow glow, spanning across the middle of the slide.

## Product Overview



- Indoor fast installations and concave convex design

# Scope of Applications

A horizontal light flare effect consisting of a bright yellow-white point of light on the left, with a long, thin, glowing yellow line extending to the right across the center of the slide.

## Scope of Applications



- *The product can be widely applied in different applications, including studios, shopping malls, meeting room etc.*

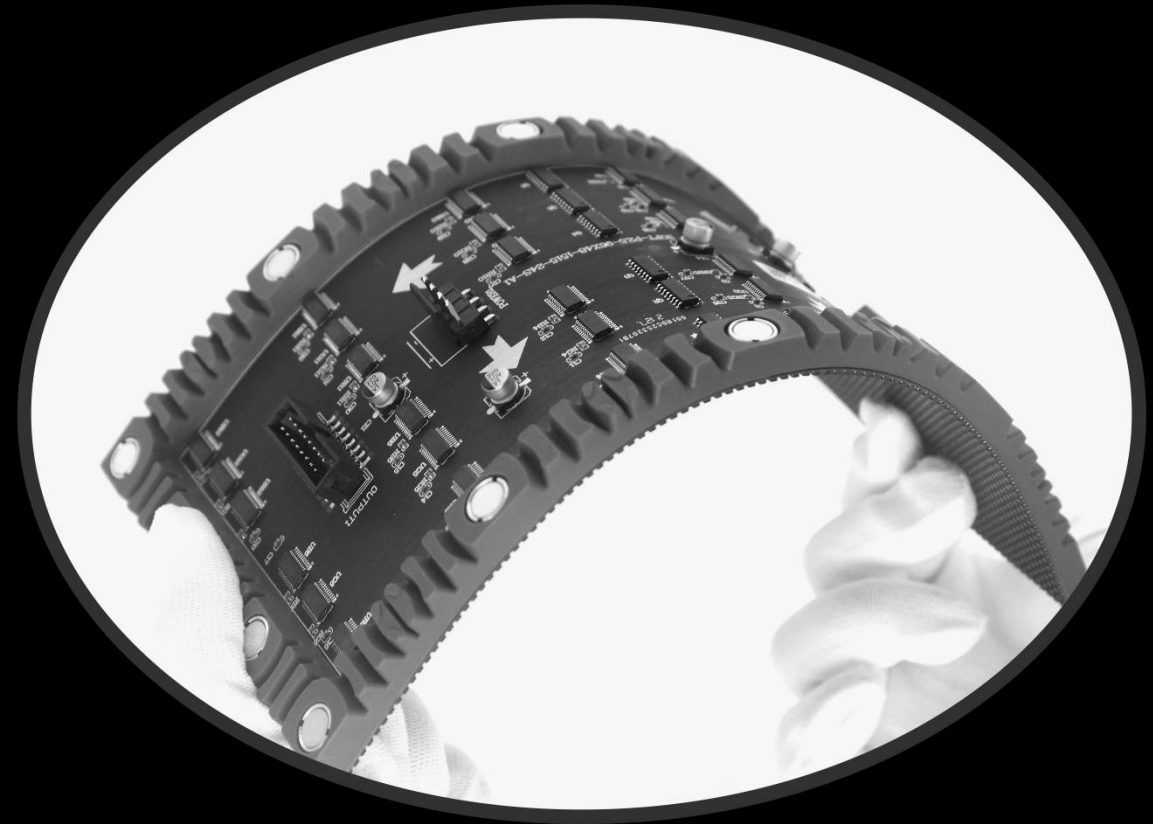
# Product Features

A horizontal light flare effect consisting of a bright yellow-white point of light on the left, with a long, thin, glowing yellow-orange streak extending across the width of the slide. The background is dark with some faint, out-of-focus light spots.

# Large Curve Angle Design

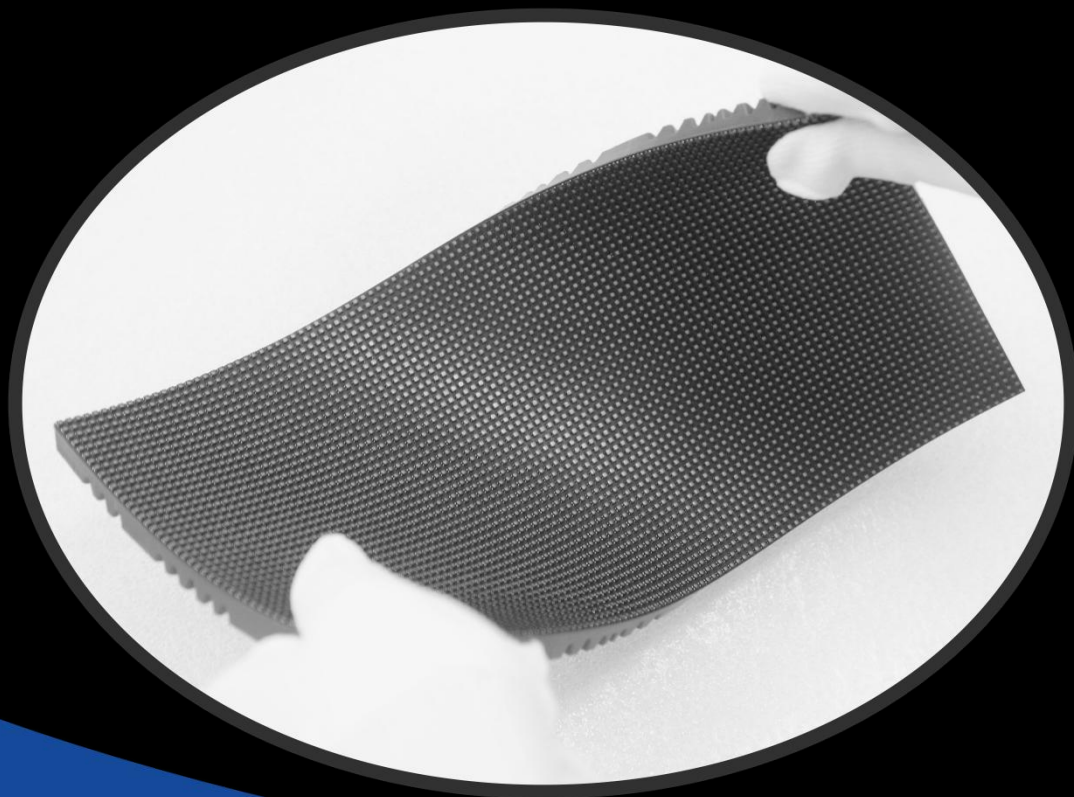
Efficient, Durable, Economical, Practical

---



- FL Series curve angle can reach more than  $\pm 72^\circ$



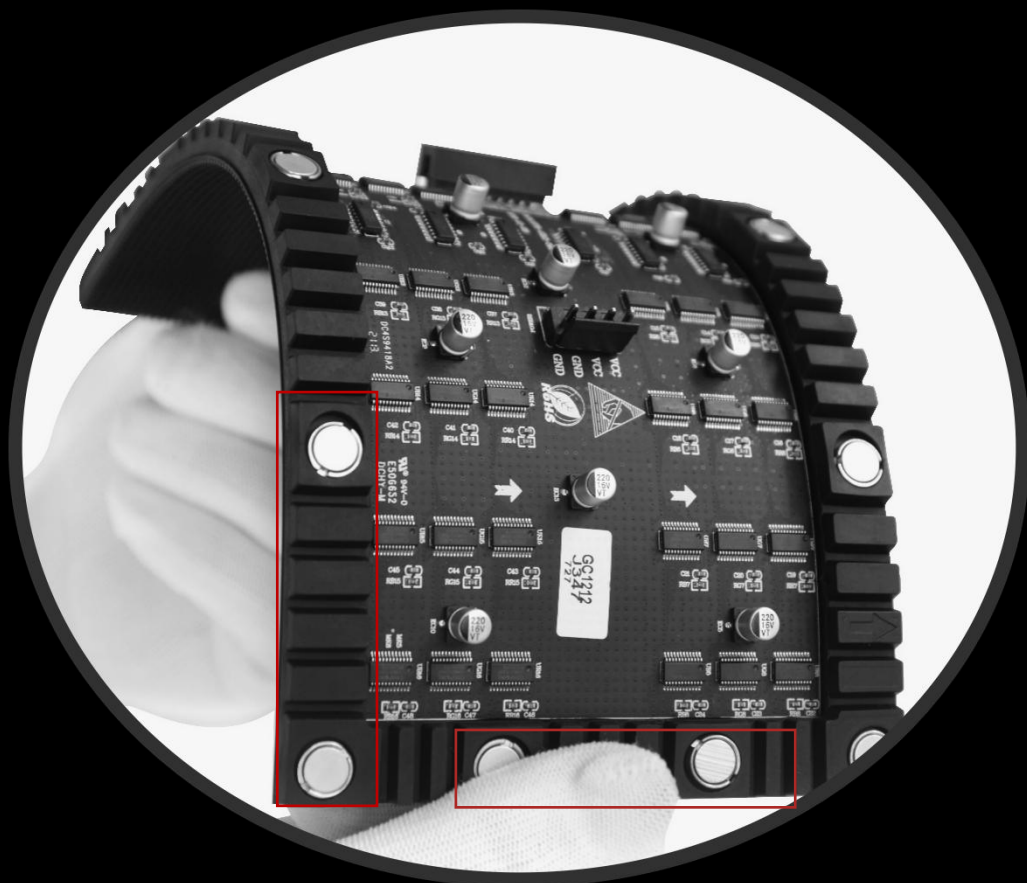


## Professional Flexible Structure

Cecile R&D team design with special soft material which anti-fire. Single module can be concave and convex in same time. Which makes the screen can have more various shape.

*Concave and Convex Flexible*

*Efficient, Durable, Economical, Practical*

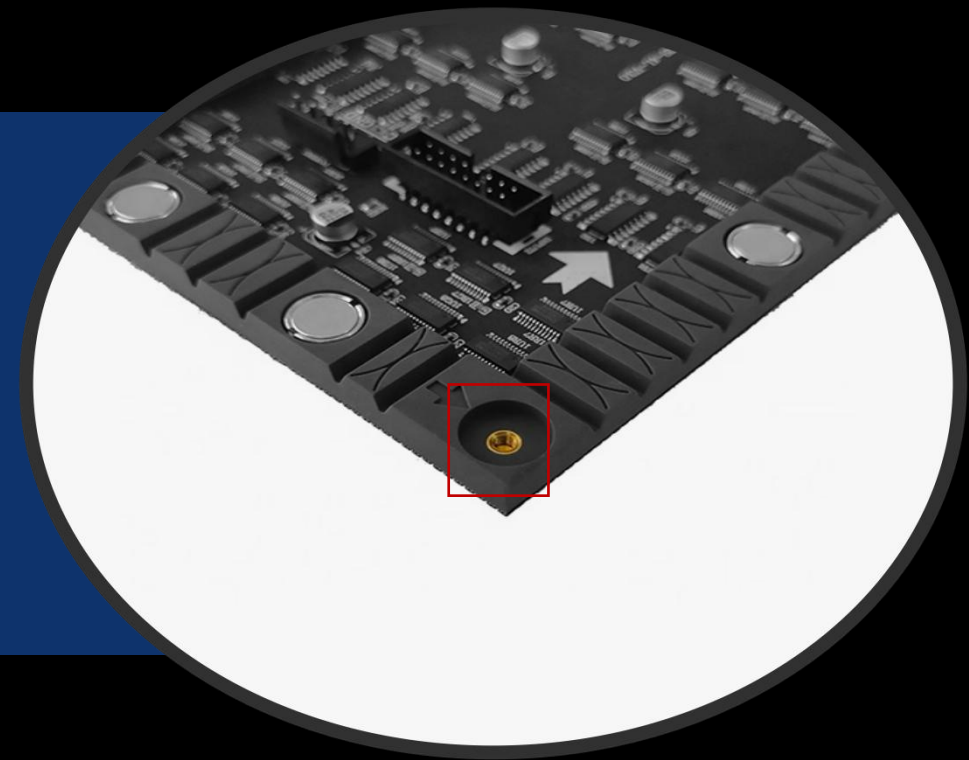


## *High Strength Magnets*

FL Series designs with very high strength magnets which promise the screen installations safe and reliable.

## Adjustable magnets

The modules design with adjustable magnets which can adjust the module installation height. If the wall or structure is not flat. We can use this function to adjust same level.

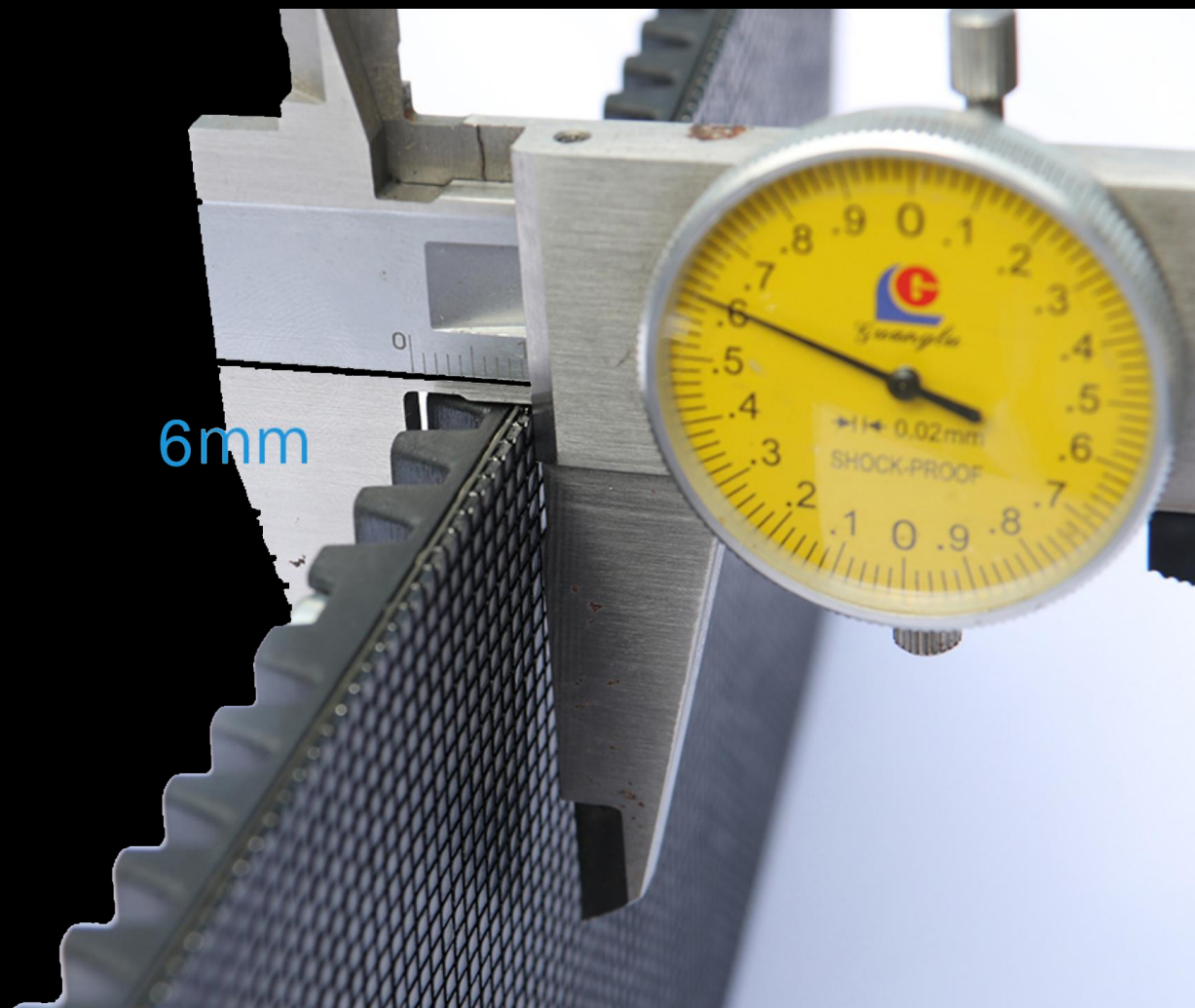


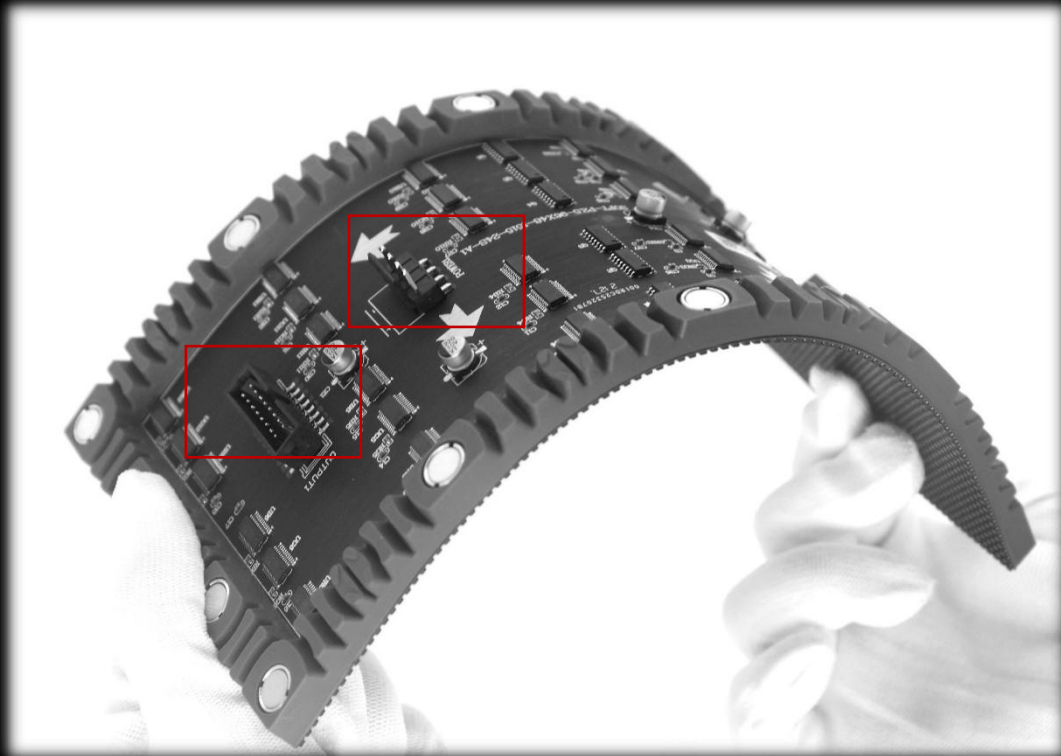
## Super slim and lightweight

---

- 6mm thickness and only 7kg/sqm

6mm

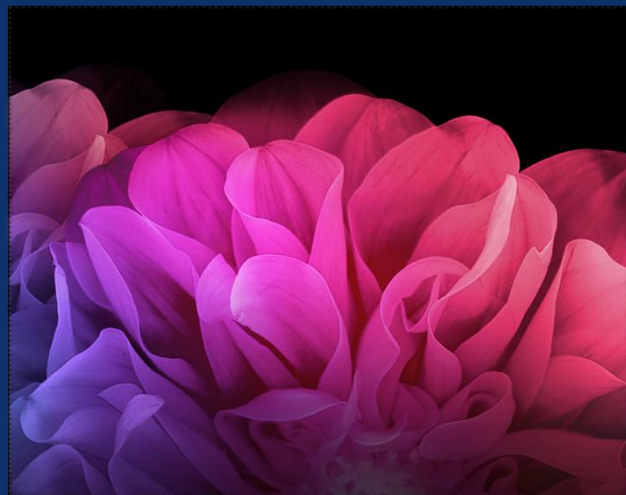




## *Stable Display Effect*

- *FL Series use high quality signal and power plugs.*
- *Stable effect for whole display effect*

## High Gray Scale



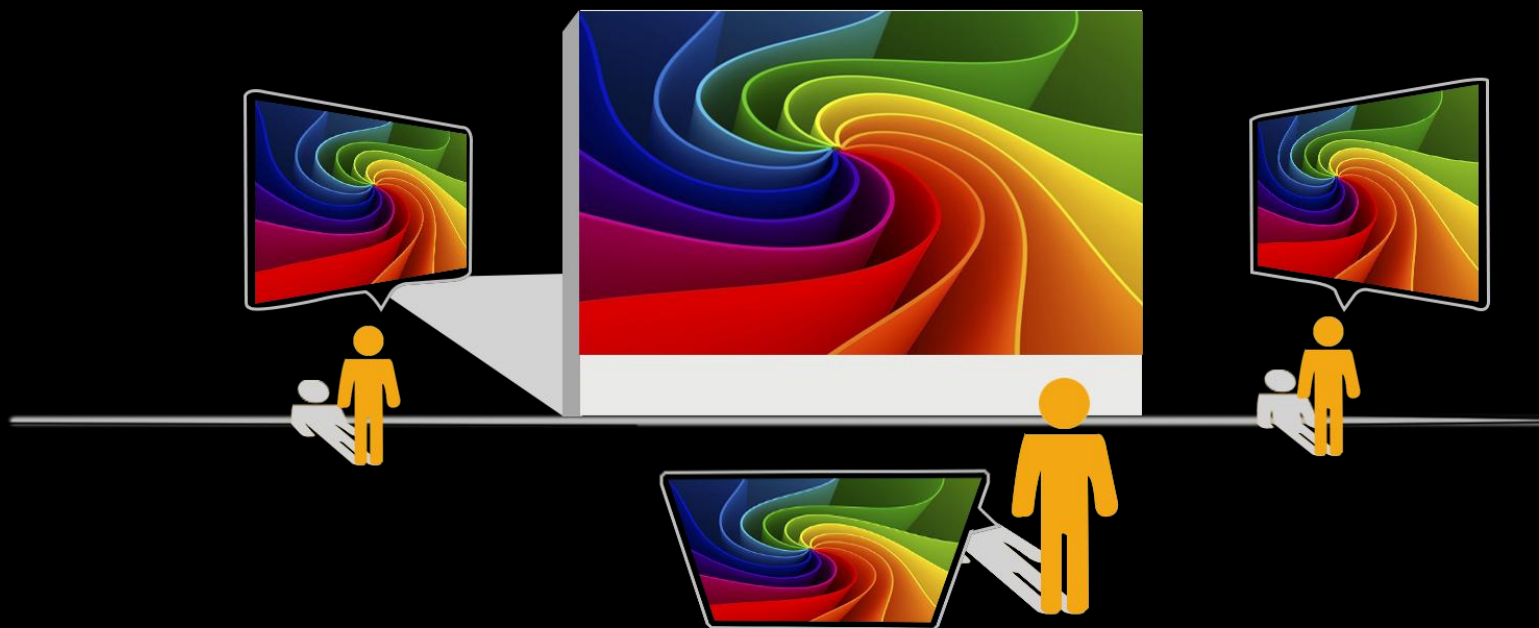
High Refresh rate  $\geq 3840\text{Hz}$

Refresh rate is up to 3840HZ, gray scale 14-16bit  
Displaying vividly.



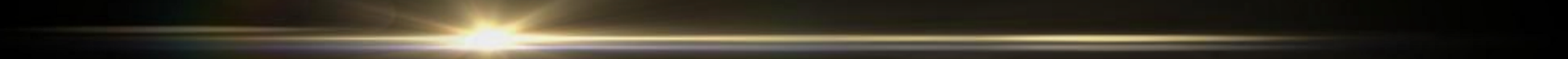
Normal/Low Refresh rate

# Wide Visual Angle



Horizontal : 160 degree, vertical : 120 degree

# Product Specifications

A horizontal light flare with a bright yellow-white center, fading to a soft glow on either side, positioned below the title.



# Specification

FL models

Pixel pitch	1.8mm	2mm	2.5mm	3mm
LED configuration	SMD1415	SMD2020	SMD2121	SMD2121
Brightness	1000 nits	1000 nits	1000 nits	1000nits
Viewing angle	160°/ 120°	160°/ 120°	160°/ 120°	160°/ 120°
Scan mode	1/32	1/30	1/24	1/20
Refresh rate	1920/3840Hz			
Processing	14/16 bits	14/16 bits	14/16 bits	14/16 bits
Module size	240mm x 120mm x 6mm (W x H x D)			
Panel size	customized (W x H x D)			
Panel weight	7kg/sqm			
Input voltage	AC100~240V 50/60 HZ			
Power consumption (Avg)	160W/sqm	160W/sqm	180W/sqm	180W/sqm
Power consumption (Max)	600W/sqm	600W/sqm	640W/sqm	640W/sqm
Working temperature	-20°C~60°C			
IP rating	IP42/IP31	IP42/IP31	IP65/IP54	IP65/IP54
Life span	100,000 hrs			
Warranty	24 months full warranty + 12 month free maintenance			